

Product: Resistance power divider

Part Number: LPD-DC/110-2s



Specification					
No.	Parameter	Minimum	Typical	Maximum	Units
1	Frequency range	DC	-	110	GHz
2	Insertion Loss	-	8	10	dB
3	Phase Balance:	-	-	± 10	dB
4	Amplitude Balance	-	-	± 0.8	dB
5	VSWR IN		1.5	2.0	:1
6	VSWR OUT		1.8	2.5	:1
7	Power(as divider)			0.5	W cw
8	Power(as combiner)			0.25	W cw
9	Operating Temperature Range	-40	-	+85	°C
10	Impedance	-	50	-	Ω
11	Connector	1.0-F			
12	Preferred finish	Yellow conductive oxidation			

**Remarks:**

1. Not Include Theoretical loss 6db
2. Power rating is for load vswr better than 1.20:1

Environmental Specifications	
Operational Temperature	-40°C~+85°C
Storage Temperature	-50°C~+105°C
Vibration	25gRMS (15 degrees 2KHz) endurance, 1 hour per axis
Humidity	100% RH at 35°C, 95%RH at 40°C
Shock	20G for 11msec half sine wave,3 axis both directions
Mechanical Specifications	
Housing	Aluminum
Connector	stainless steel
Female Contact:	gold plated beryllium bronze
Rohs	compliant
Weight	0.1kg

**Outline Drawing:**

All Dimensions in mm

Outline Tolerances ± 0.5(0.02)

成都利德尔科技有限公司 ChengDu Leader Microwave Technology Co.,Ltd

电话: 028-65199117 传真: 028-65199116

<http://www.leadermicrowave.com> [sales@leader-mw.com](mailto:sales@leader-mw.com)

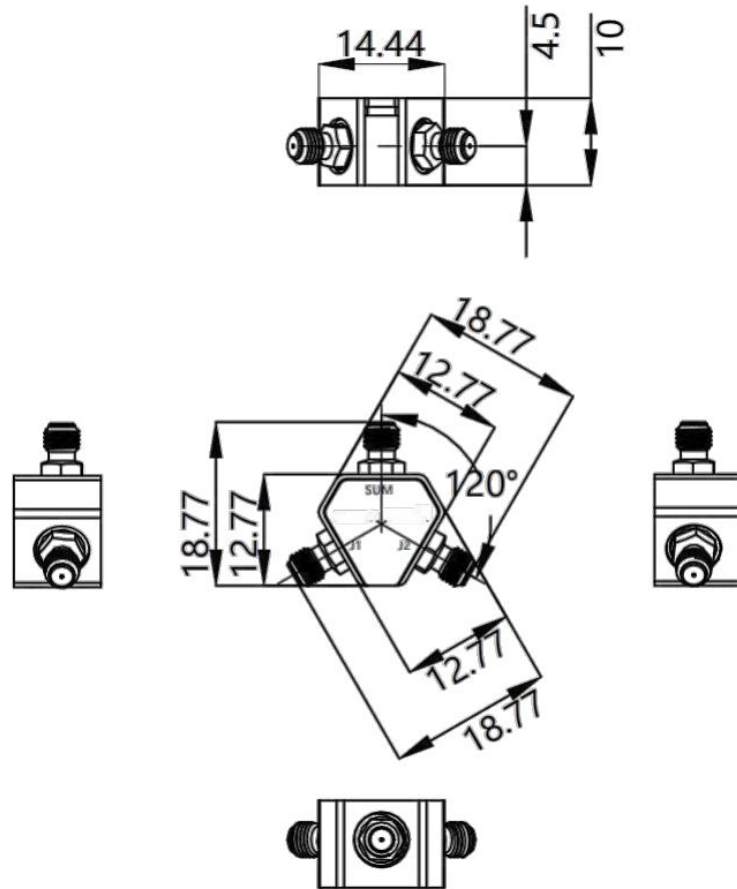
TEL: +86-28-65199117 FAX: +86-28-65199116

Add:中国 成都市成华区华翰路89号 610000

No.89,Huahan Road, chenghua Zone Chengdu, Sichuan China Zip Code:610000

Mounting Holes Tolerances  $\pm 0.2(0.008)$

All Connectors: 1.0-Female



## Test plots

成都利德尔科技有限公司 ChengDu Leader Microwave Technology Co.,Ltd

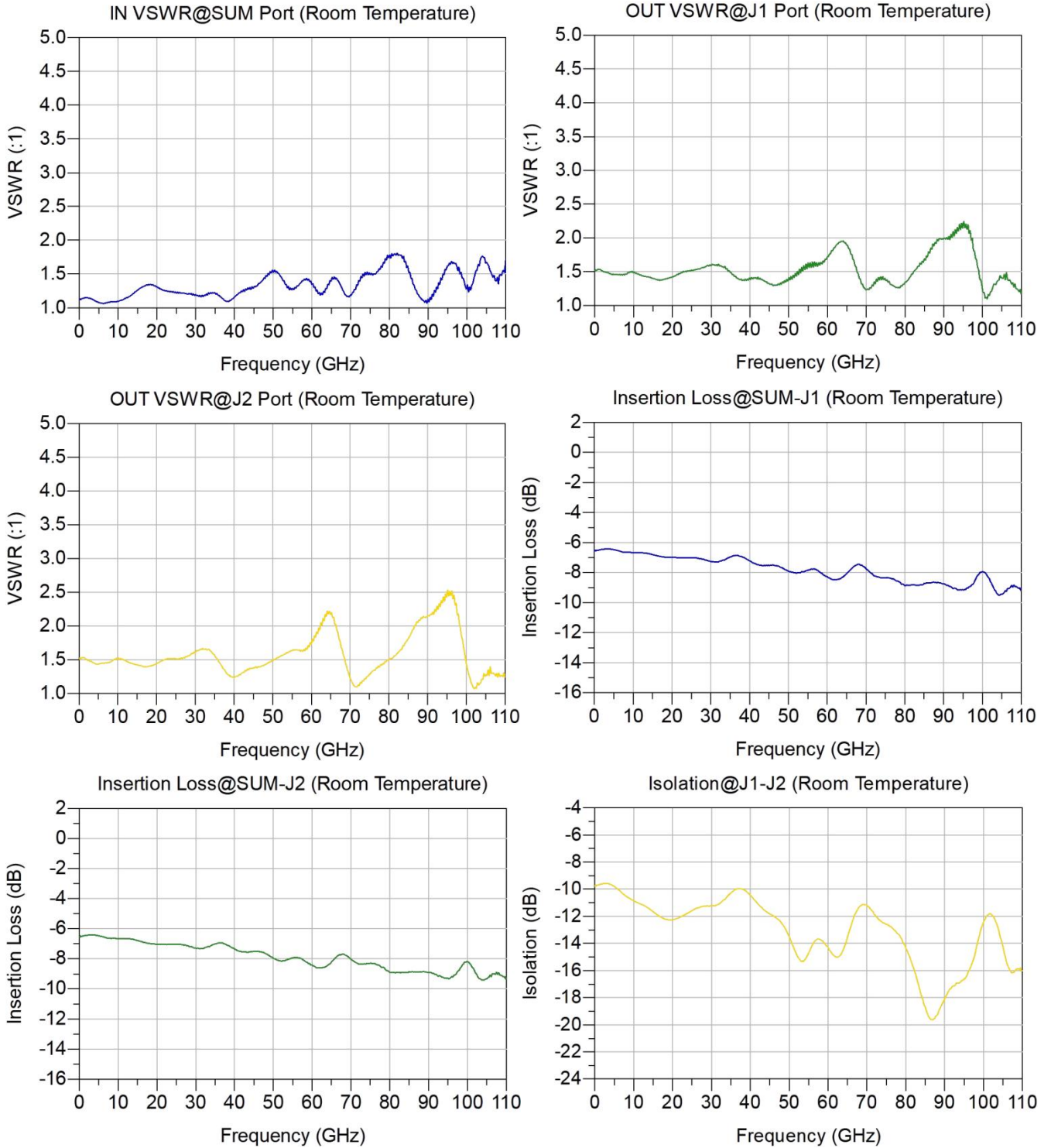
电话: 028-65199117 传真: 028-65199116

<http://www.leadermicrowave.com> [sales@leader-mw.com](mailto:sales@leader-mw.com)

TEL: +86-28-65199117 FAX: +86-28-65199116

Add: 中国 成都市成华区华翰路 89 号 610000

No.89,Huahan Road, chenghua Zone Chengdu, Sichuan China Zip Code:610000



成都利德尔科技有限公司 ChengDu Leader Microwave Technology Co.,Ltd

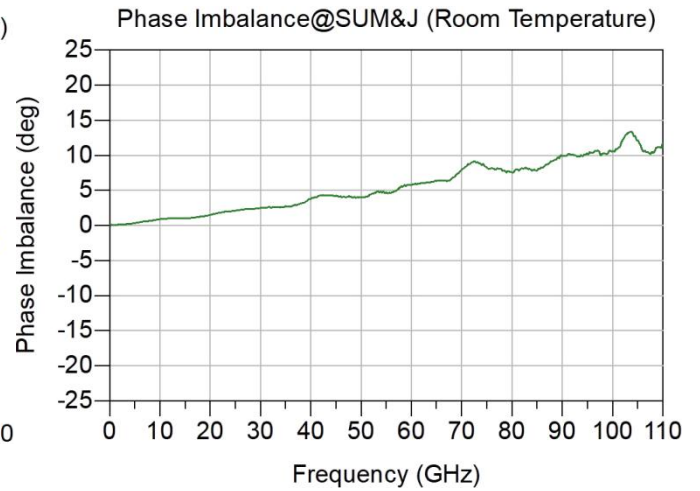
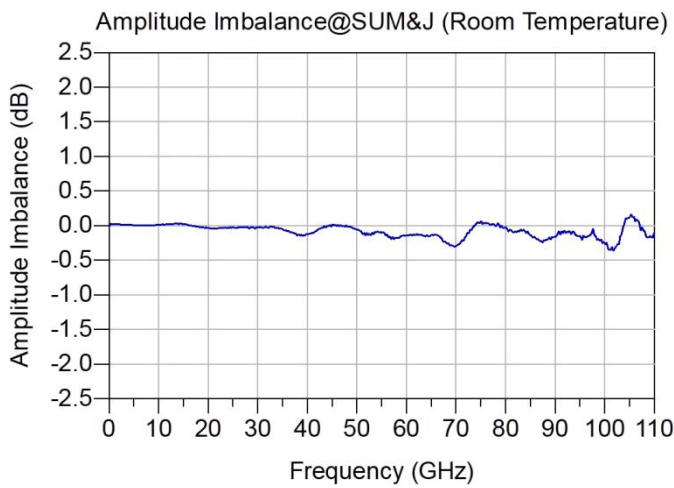
电话: 028-65199117 传真: 028-65199116

<http://www.leadermicrowave.com> [sales@leader-mw.com](mailto:sales@leader-mw.com)

TEL: +86-28-65199117 FAX: +86-28-65199116

Add: 中国 成都市成华区华翰路 89 号 610000

No.89,Huahan Road, chenghua Zone Chengdu, Sichuan China Zip Code:610000



成都利德尔科技有限公司 ChengDu Leader Microwave Technology Co.,Ltd

电话: 028-65199117 传真: 028-65199116

<http://www.leadermicrowave.com> [sales@leader-mw.com](mailto:sales@leader-mw.com)

TEL: +86-28-65199117 FAX: +86-28-65199116

Add: 中国 成都市成华区华翰路 89 号 610000

No.89,Huahan Road, chenghua Zone Chengdu, Sichuan China Zip Code:610000